

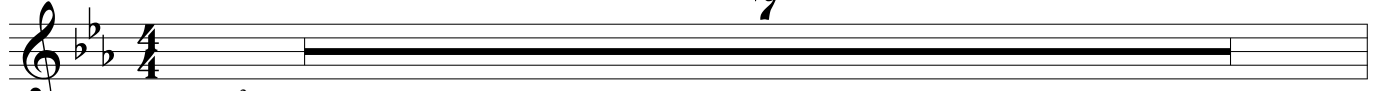
Piano, Guitars, Synth

Synth: Rock Organ GM 019

# Operator

Freely

7



Swing ♩ = 120  $\text{♩} = \text{♩}^{\text{3}}$

8 "one, two, three..." E<sup>b</sup> A<sup>b</sup> E<sup>b</sup>

A musical staff in 4/4 time with a key signature of two flats. It begins with a 4-measure rest, followed by a dynamic marking of *mf*. The staff contains a rhythmic pattern of eighth notes with diagonal slashes, indicating a continuous accompaniment.

13 B<sup>b</sup> F7 B<sup>b</sup><sub>sus</sub> B<sup>b</sup>

A musical staff in 4/4 time with a key signature of two flats. It contains a 4-measure rest with diagonal slashes, indicating a continuous accompaniment.

17 E<sup>b</sup> A<sup>b</sup> E<sup>b</sup> A<sup>b</sup> A<sup>b</sup>m7

A musical staff in 4/4 time with a key signature of two flats. It contains a 4-measure rest with diagonal slashes, indicating a continuous accompaniment.

21 E<sup>b</sup> A<sup>b</sup> Fm7 A<sup>b</sup>/B<sup>b</sup> E<sup>b</sup> A<sup>b</sup>/B<sup>b</sup>

A musical staff in 4/4 time with a key signature of two flats. It contains a 4-measure rest with diagonal slashes, indicating a continuous accompaniment.

25 E<sup>b</sup> A<sup>b</sup> E<sup>b</sup>

A musical staff in 4/4 time with a key signature of two flats. It contains a 4-measure rest with diagonal slashes, indicating a continuous accompaniment.

29 B<sup>b</sup> F7 B<sup>b</sup><sub>sus</sub> B<sup>b</sup>

A musical staff in 4/4 time with a key signature of two flats. It contains a 4-measure rest with diagonal slashes, indicating a continuous accompaniment.

33 E<sup>b</sup> A<sup>b</sup> A<sup>b</sup>m7

A musical staff in 4/4 time with a key signature of two flats. It contains a 4-measure rest with diagonal slashes, indicating a continuous accompaniment.

37 E<sup>b</sup> A<sup>b</sup> Fm7 A<sup>b</sup>/B<sup>b</sup> E<sup>b</sup> A<sup>b</sup>/B<sup>b</sup>

A musical staff in 4/4 time with a key signature of two flats. It contains a 4-measure rest with diagonal slashes, indicating a continuous accompaniment.

Operator

41 Eb Ab Eb

45 Bb F7 Bbsus Bb

49 Eb Ab Abm7

53 Eb Ab Fm7 Ab/Bb Eb Ab/Bb

57 Eb Ab Eb

61 Bb F Bbsus Bb

65 Eb Ab Eb Ab Abm7

69 Eb Ab Fm7 Ab/Bb Eb

73 Ab Fm7 Ab/Bb Eb Ab Fm7 Ab/Bb Ab Eb

*rit.*